

## CaesAid Cup

# QuickGuide

**Disclaimer:** This document provides a general overview for successful use of Medela's electric vacuum delivery system. It is not a training manual for vacuum extraction, and it assumes that all clinicians using this Medela system are fully trained in the safe application of medical suction for vacuum extraction procedures. This QuickGuide in no way replaces the instructions for use REF 200.5524/200.5525/177.0224.

<b>1</b>	<b>Disposable Collection System</b>	Steps 1–2
	077.0083	Disposable suction liner 1.5l or
	077.0084	Disposable suction liner 1.5l with solidifier
	077.0082	Suction jar PC for liner 1.5l
	077.0521	Clamp holders for jars
<b>2</b>	<b>Change-over valve</b>	Steps 3–4
	077.0563	Change-over valve
<b>3</b>	<b>Foot vacuum regulator</b>	Step 5
	077.0731	Foot vacuum regulator
<b>4</b>	<b>Apgar Timer</b>	Step 8
	017.0015	Apgar timer for standard rail (10x25mm)
<b>5</b>	<b>Tubing holder</b>	Step 9
	077.0751	Left side
	077.0752	Right side
<b>6</b>	<b>Fingertip tubing</b>	
	077.0951	Disposable Fingertip tubing (not shown)
<b>7</b>	<b>CaesAid Cup</b>	Next page
	077.0081	CaesAid Cup



## Setting up the vacuum pump



Attach the clamp holder on the rail. Attach a 1.5 liter suction jar for the disposable system.



Prepare a new 1.5 liter disposable suction liner. Insert and press lid on firmly. Repeat for second jar.



Attach the change-over valve to the rail (between the two jars).



Connect the tubing from the change-over valve to the vacuum ports of the suction jar.



Connect the foot vacuum regulator: the silver 3-way adapter must be fully seeded into the safety device (overflow jar) of the suction pump.



Plug the supplied tubing into the 3-way adapter.



Plug the other end of the tubing into the vacuum port of the change-over valve.



Attach Apgar Timer on the side rail (recommended position is the side).



Attach tubing holder on the other side.

## Connecting sterile components and setting desired traction pressure



Take the angle piece (attached on lid of disposable liner) and insert it into the patient connection port.



Attach fingertip tubing to angle piece.



Attach tubing from CaesAid Cup to inserted angle piece of second jar.



Turn on the pump and bend tubing.



Fully depress the vacuum regulator (forward and down, using ball of foot).



Set to the required maximum vacuum (clockwise) using the vacuum regulator. Recommended vacuum is between  $-60$  and  $-80$  kPa ( $-450$  and  $-600$  mmHg):



Release the tubing.



If desired, test vacuum against a gloved sterile hand. Release vacuum with foot vacuum regulator and remove hand.

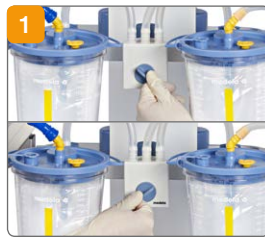


Return foot vacuum regulator to resting "zero pressure" state (rear and down using heel of foot).

## Application



At this point, the equipment is ready for use for the vacuum delivery procedure.



General suction: switch to the first jar. CaesAid Cup: switch to the second jar.



As soon as the baby's head is born, push down with heel of the foot vacuum regulator to release suction.

## Post delivery



Disconnect the sterile tubing and the angle piece. Discard with cup per hospital policy.



Close the patient port with the plug.



Disconnect the tubing from the CaesAid Cup. Reprocess according to hospital policy or the Medela reprocessing guide (200.2391)



Close the patient port with the plug. Turn off the pump.



Turn the vacuum regulator fully counterclockwise to set the vacuum level to 0.



Remove disposable liners and discard according to hospital policy. To save set-up time for the next procedure, insert new disposable liner into clean jar.