

Vacuum Assisted Delivery System



MANUAL VACUUM EXTRACTOR PUMP



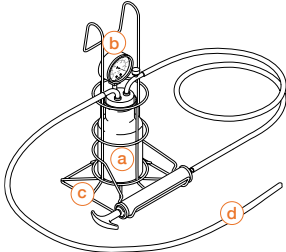
Medela Vacuum Extractor Pump

Manual Vacuum Extractor Pump

The Medela Manual Vacuum Extractor Pump supports you whenever the birth process requires vacuum assistance and no reliable power source is available. The long lasting design is well proven and appreciated all over the world.

Ref. 077.0081 Manual Vacuum Extractor Pump

0 – 100 kPa

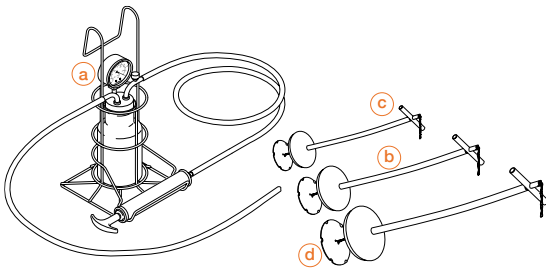


Complete with:

- (a) One plastic vacuum bottle, 500 ml
- (b) Vacuum gauge
- (c) Plastic coated basket
- (d) Silicone tubing, Ø 6.5 x 11.5 mm, 50 cm and 150 cm

Ref. 077.0026 Malmström Vacuum Extractor

0 – 100 kPa

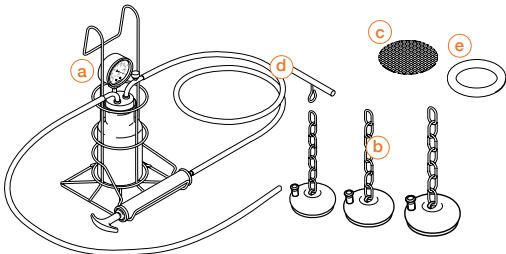


Complete with:

- (a) Manual vacuum extractor pump (see Ref. 077.0081)
- (b) 3 Malmström suction cups 40, 50, 60 mm
- (c) One traction handle each
- (d) Bottom-plate of stainless steel
 - Spare gasket

Ref. 077.0058 Bird Vacuum Extractor

0 – 100 kPa

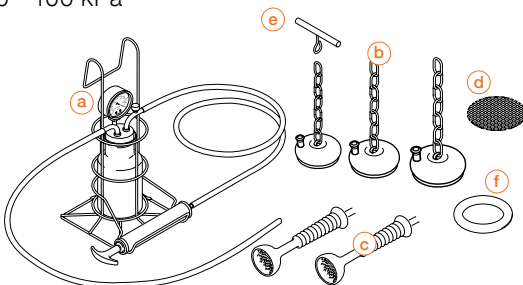


Complete with:

- (a) Manual vacuum extractor pump (see Ref. 077.0081)
- (b) 3 Bird anterior suction cups, 40, 50, 60 mm
- (c) 3 x 5 bottom-plates
- (d) One traction handle
- (e) 5 locking rings for tubing
 - Spare gasket

Ref. 077.0060 Bird Vacuum Extractor with additional Silc Cups

0 – 100 kPa



Complete with:

- (a) Manual vacuum extractor pump (see Ref. 077.0081)
- (b) 3 Bird anterior suction cups 40, 50, 60 mm
- (c) 2 Silc-Cups, 50 and 60 mm
- (d) 10 bottom-plates to each anterior cup
- (e) 2 traction handles
- (f) 5 locking rings for tubing
 - 3 m extra silicone tubing
 - Spare gasket

Medical Vacuum Technology
for Healthcare Professionals

Please contact us or your local Medela
representative for details.

 Medela AG
Lättichstrasse 4b
6341 Baar, Switzerland
www.medela.com

CE 0123

Local contact: